

2004 Minnesota Student Survey

Alcohol and Other Drug Trends

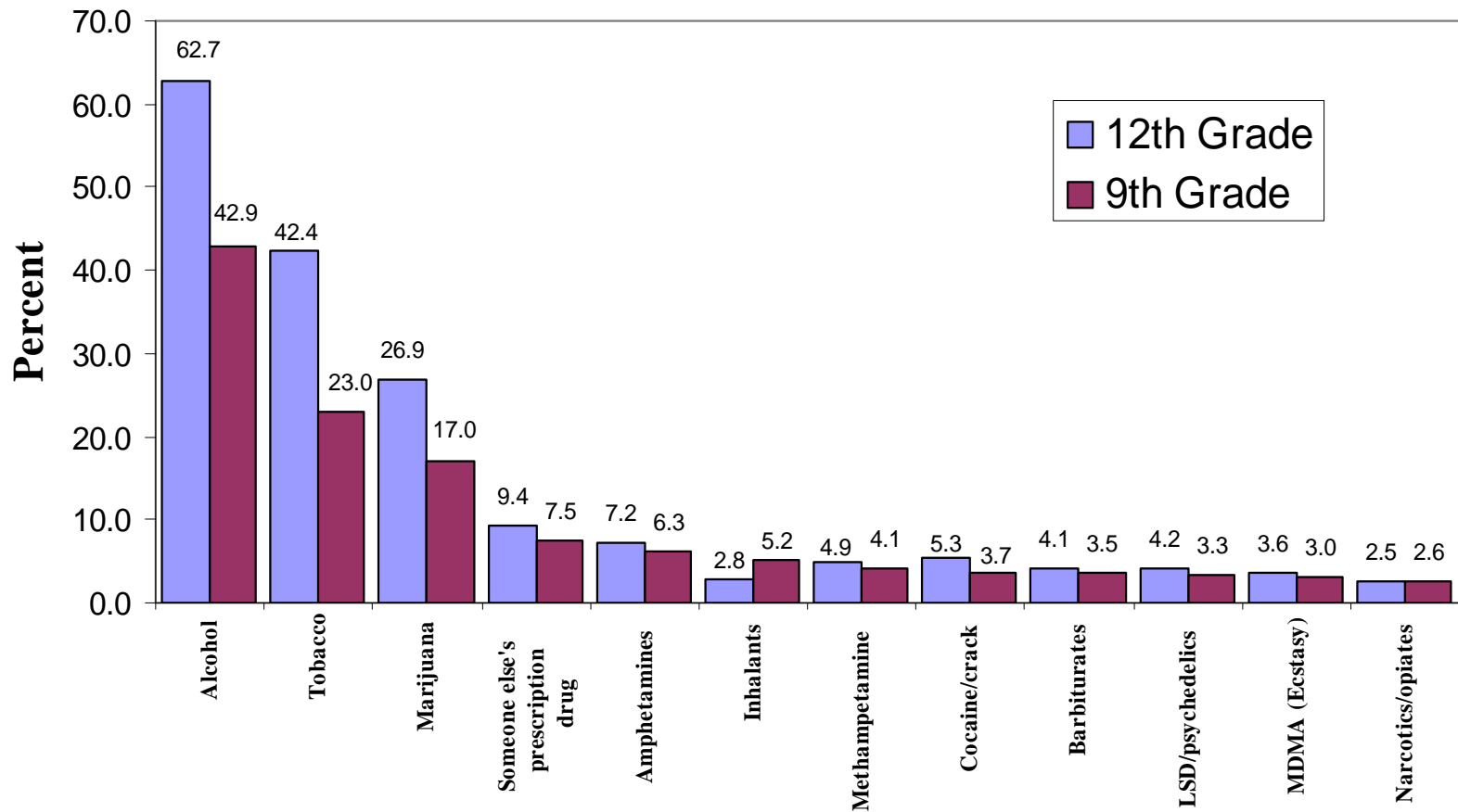
Minnesota Department of Health



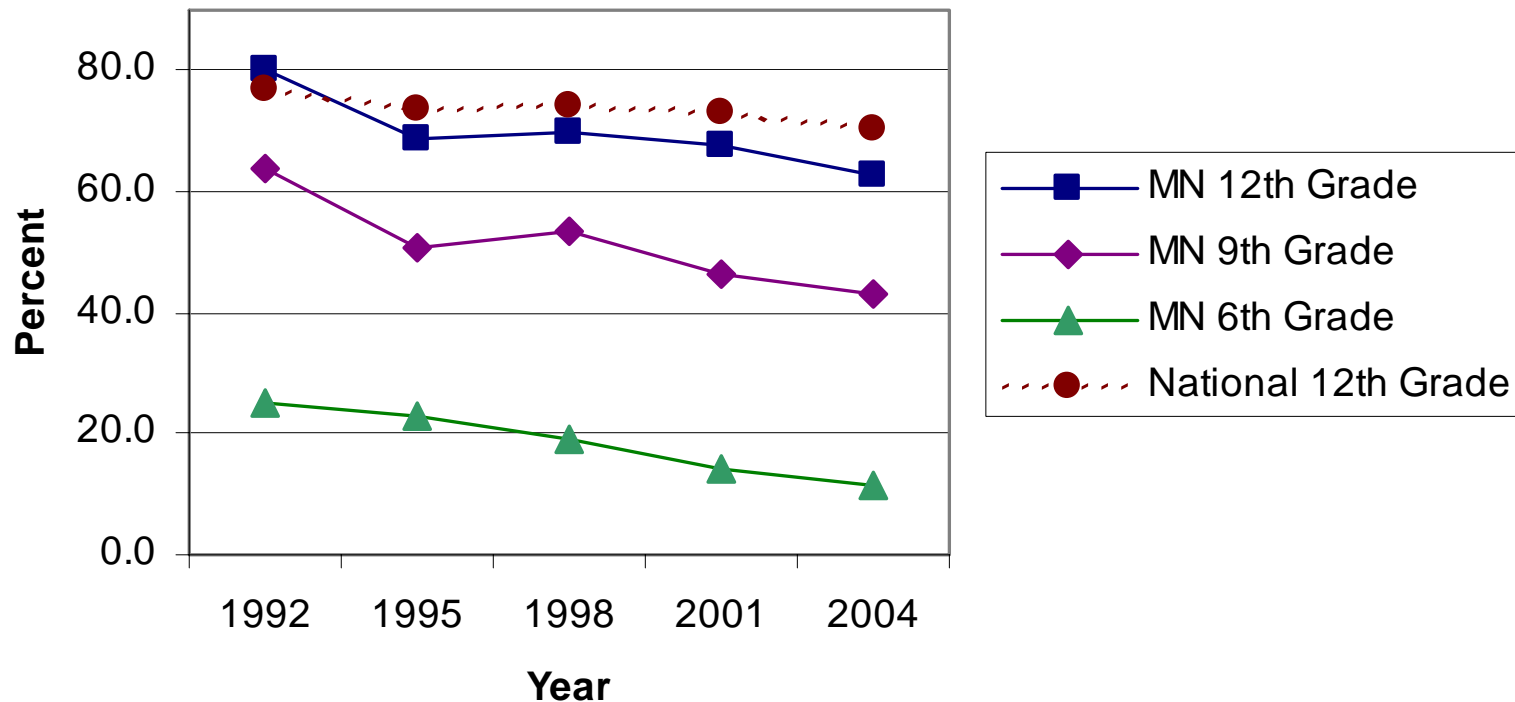
Minnesota Student Survey

- ☀ 6th, 9th and 12th Grade
- ☀ Voluntary, confidential and anonymous
- ☀ Broad issues covered including:
 - ☀ Alcohol, tobacco and other drug use
 - ☀ School climate
 - ☀ Nutrition
 - ☀ Academics
 - ☀ Other topics
- ☀ Every 3 years since 1989

Students using chemical substances 1+ times in Past Year -- 2004

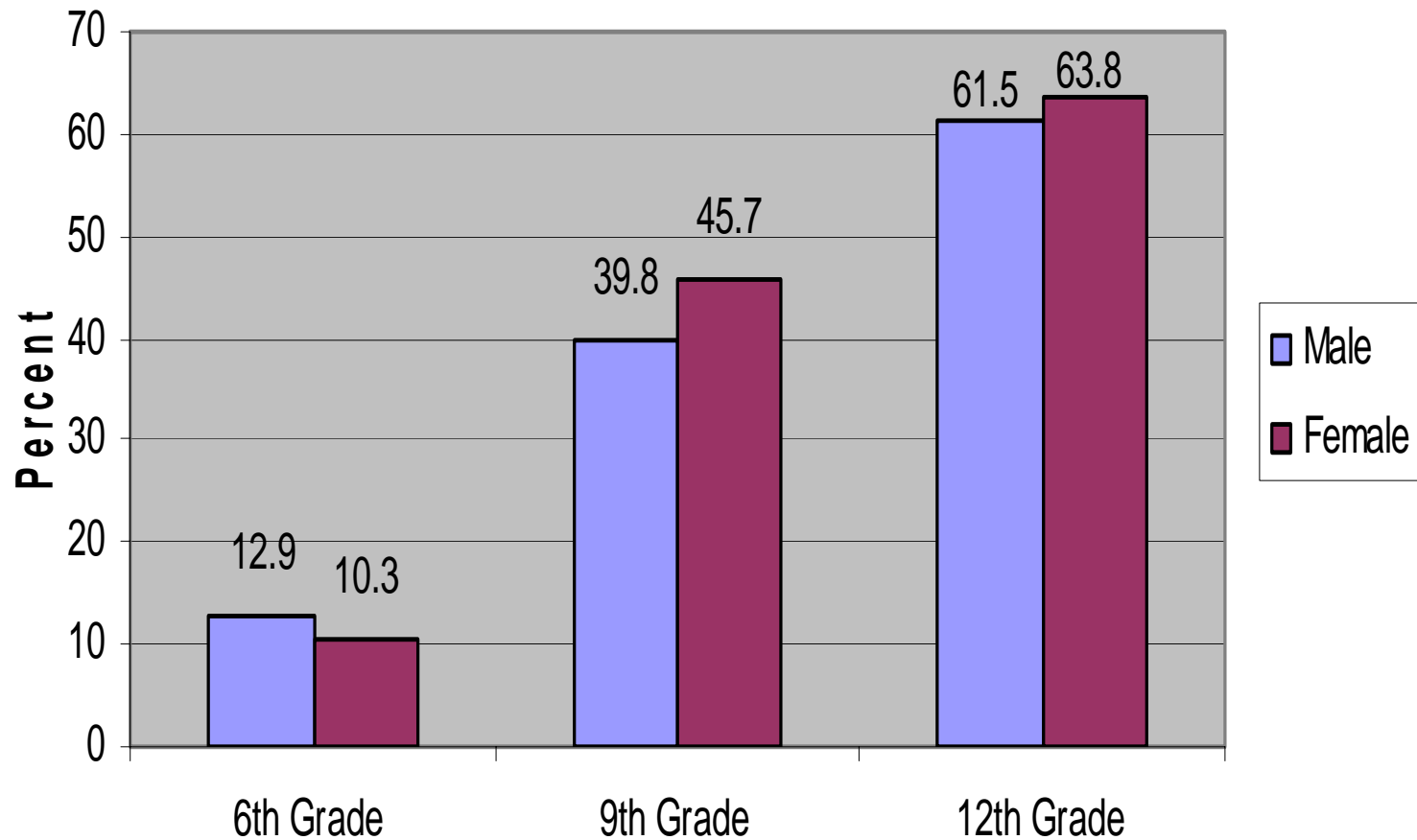


Alcohol Use in the Past Year

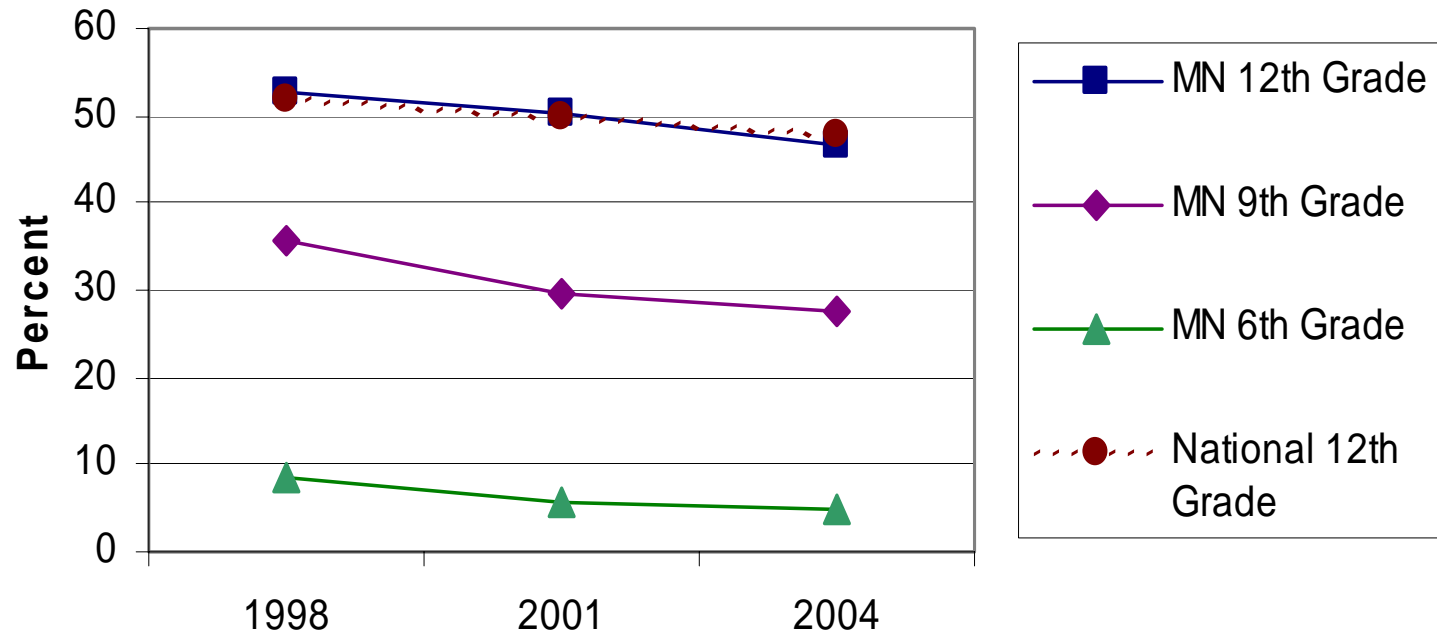


Data Sources: Minnesota Student Survey, 2004 National Monitoring the Future Survey

Alcohol Use in the Past Year 2004

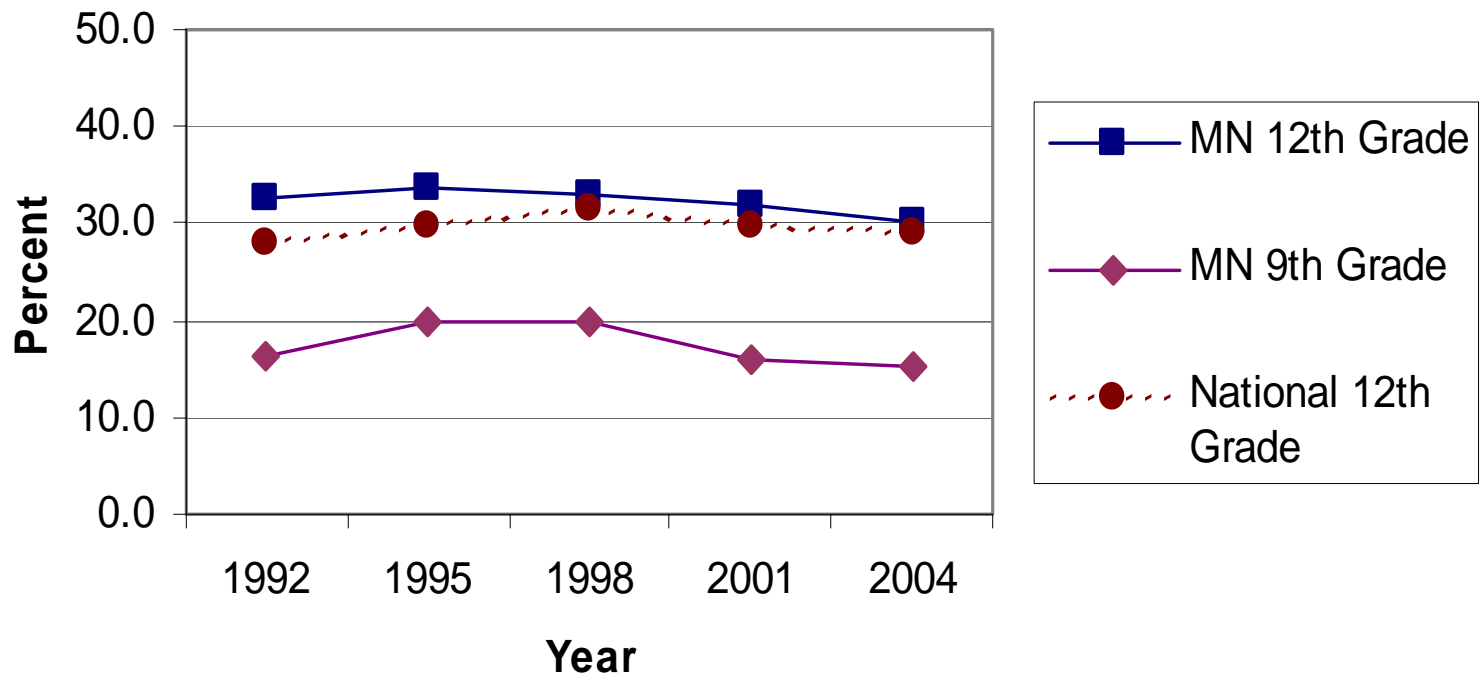


Alcohol Use in the Past Month



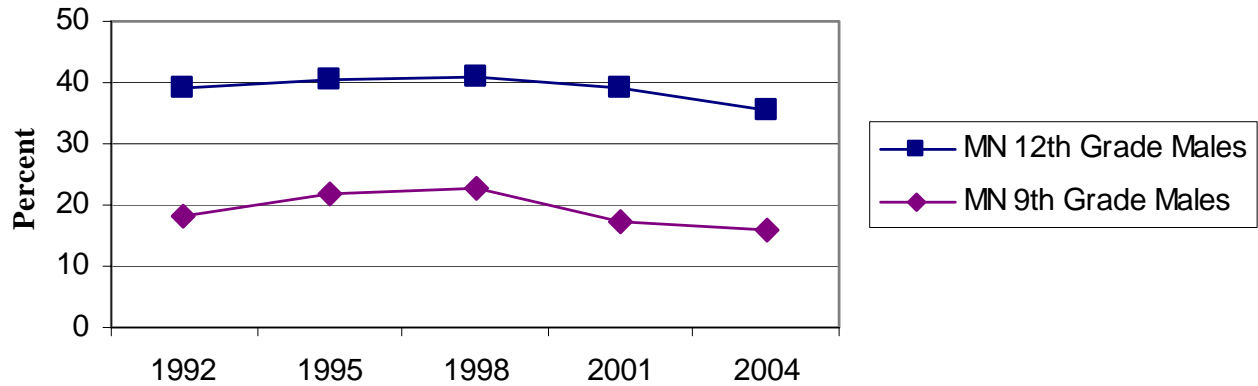
Data Sources: Minnesota Student Survey, 2004 National Monitoring the Future Survey

Binge Drinking (5 or more drinks in a row) in past 2 weeks

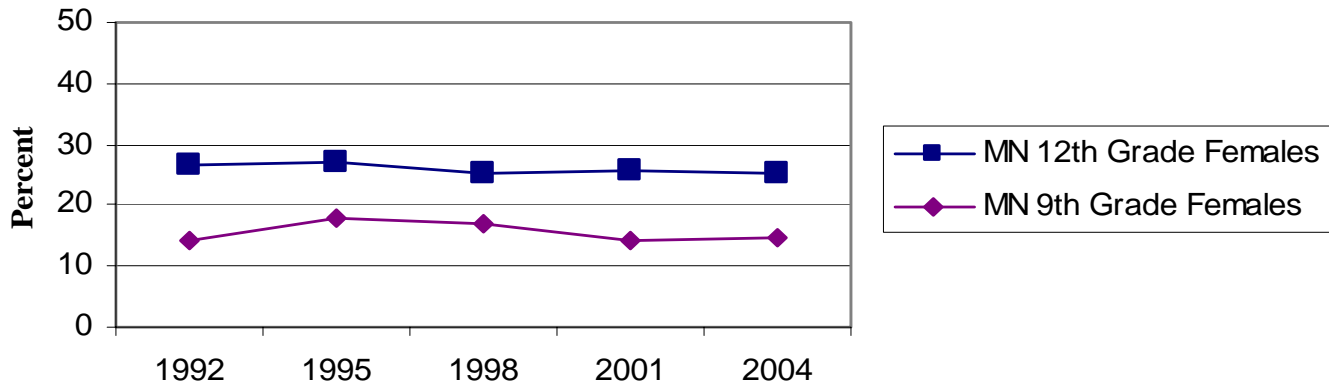


Data Sources: Minnesota Student Survey, 2004 National Monitoring the Future Survey

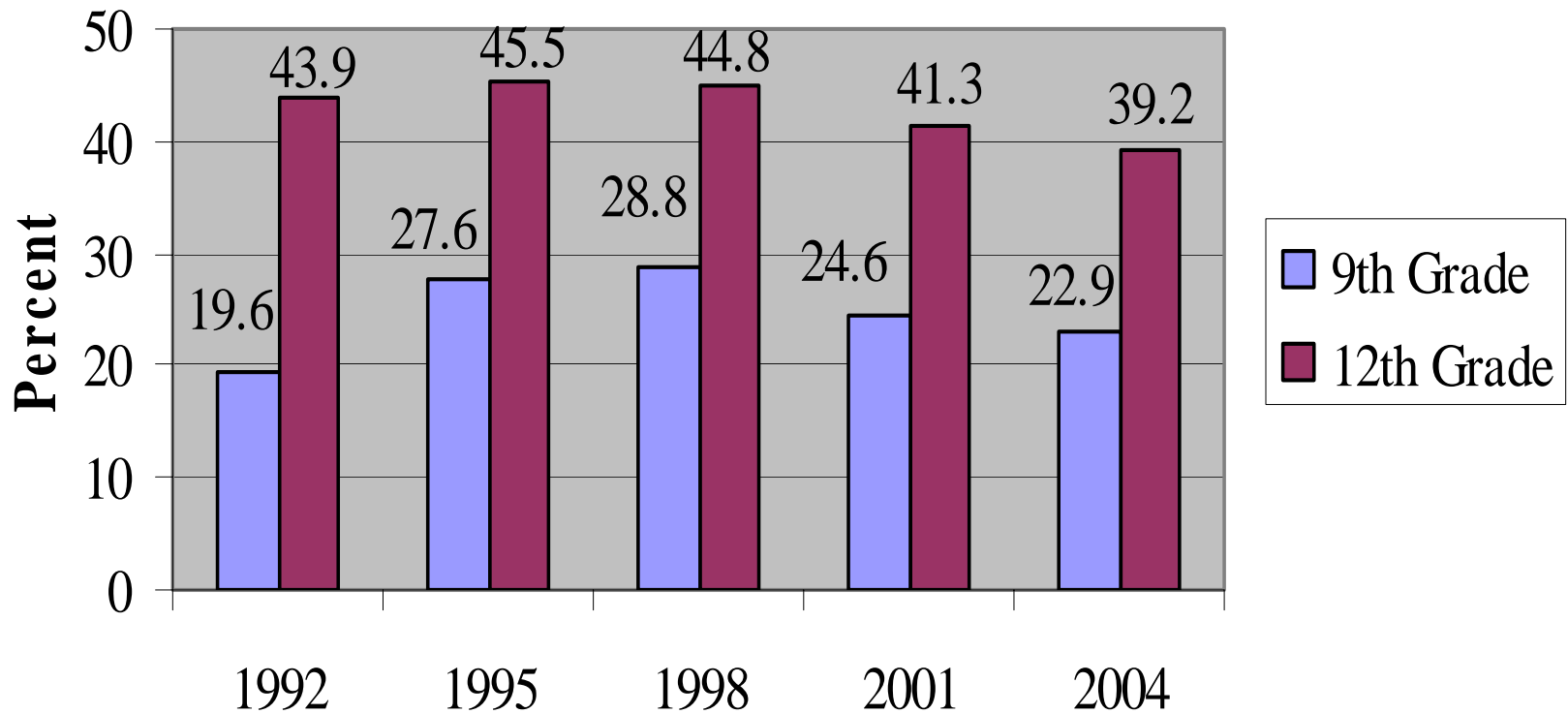
Binge Drinking (5 or more drinks in a row) in past two weeks -- Males



Binge Drinking (5 or more drinks in a row) in past two weeks -- Females

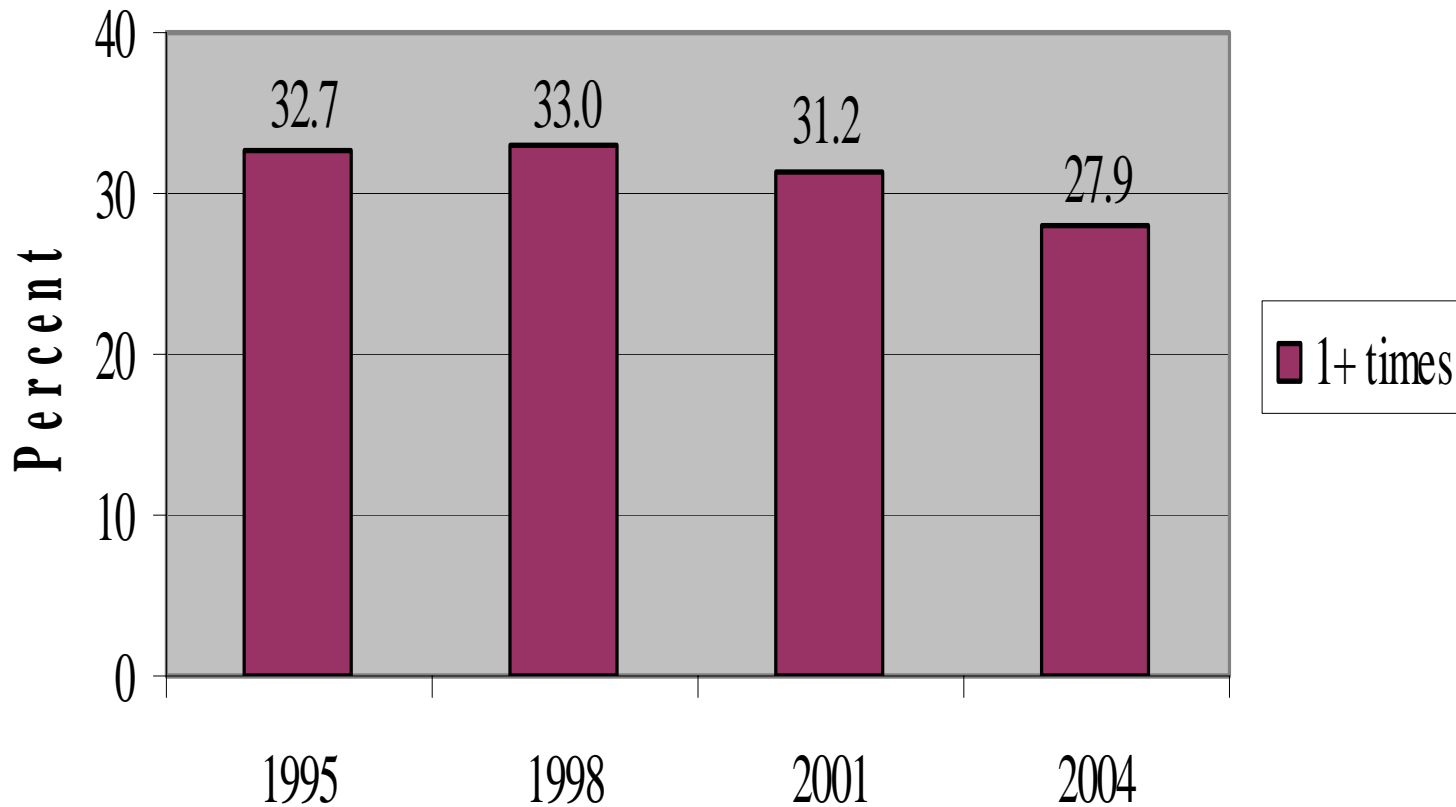


Ridden with friends after the friends used alcohol/drugs

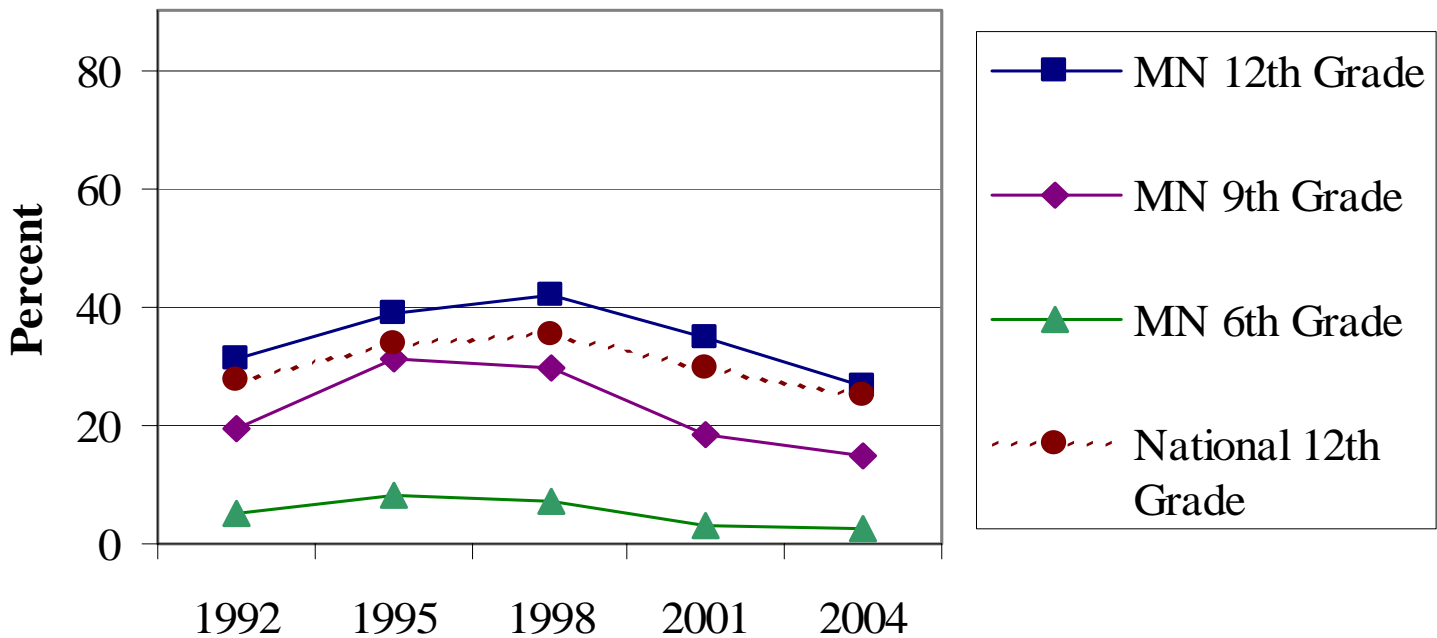


Data Sources: Minnesota Student Survey

Driven after using alcohol/drugs in the past year 12th Graders

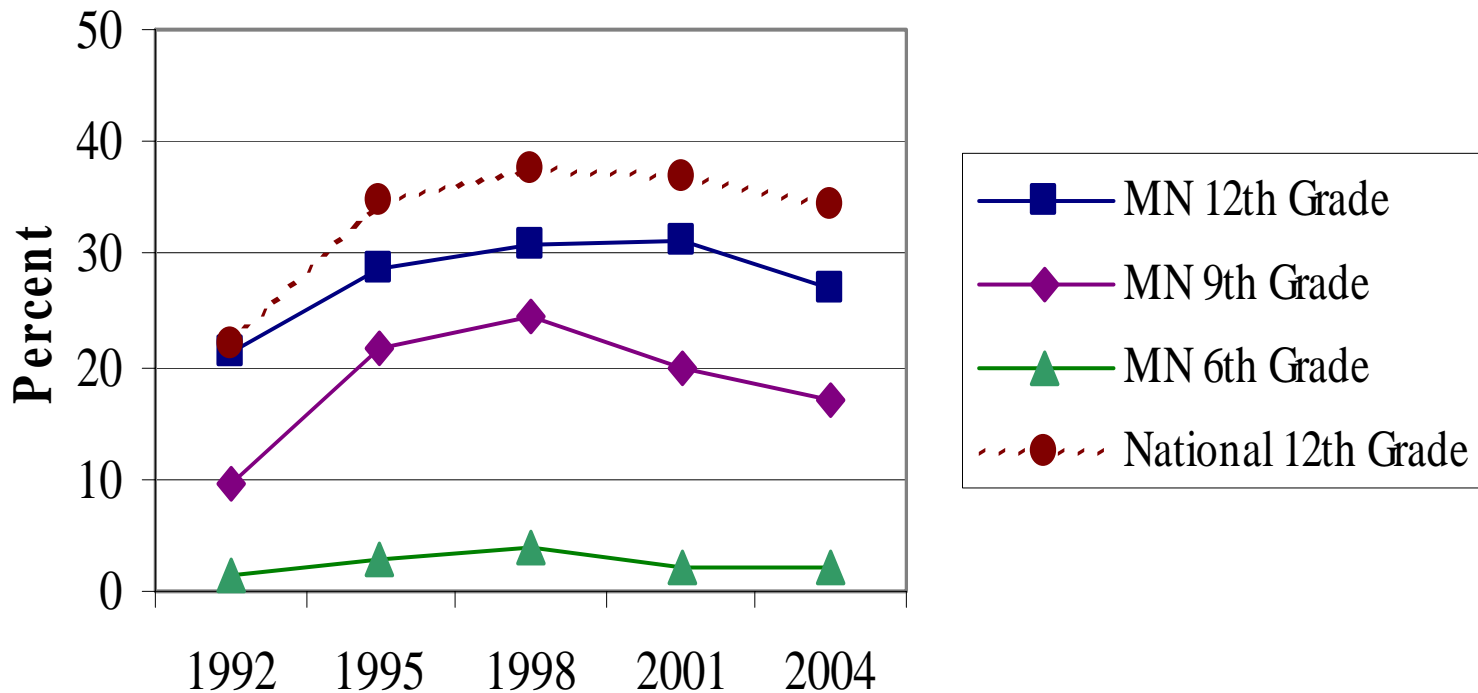


Smoked Cigarettes during the previous 30 days



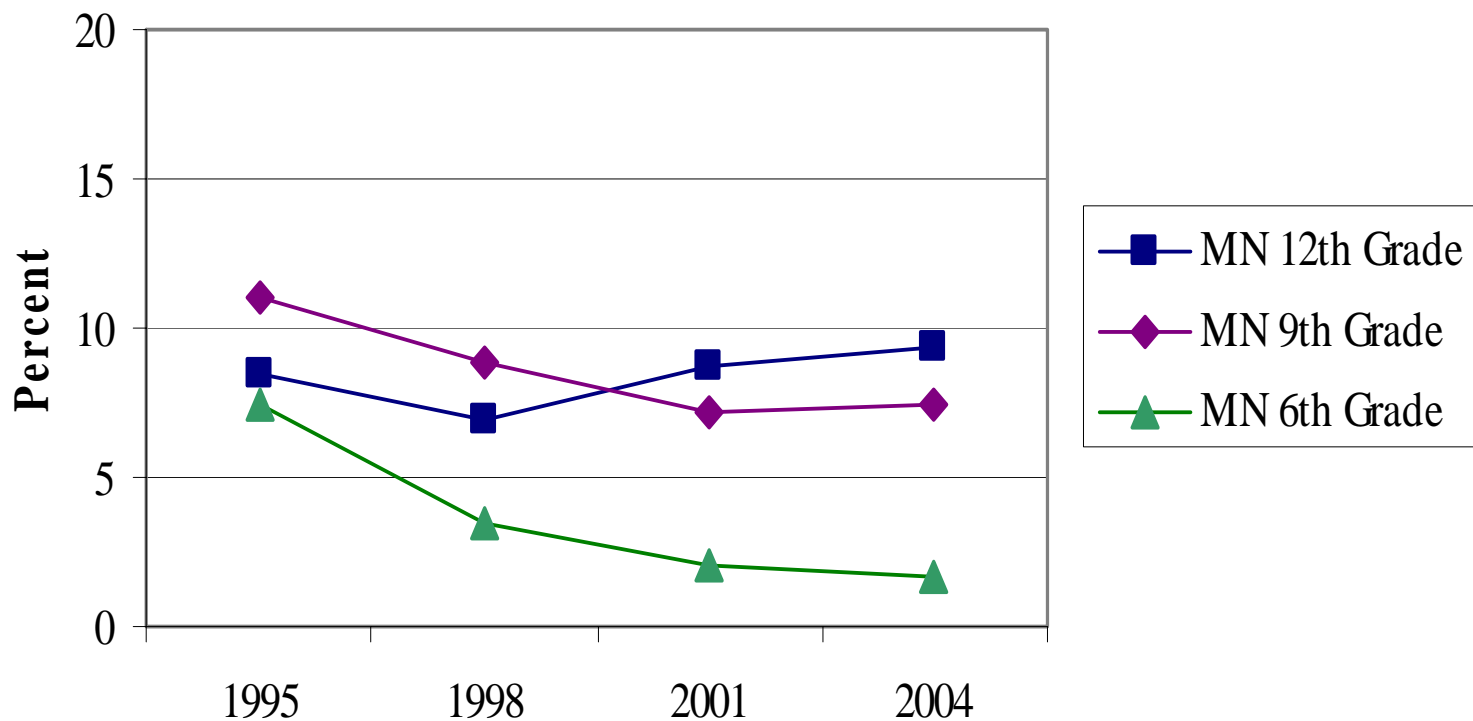
Data Sources: Minnesota Student Survey, 2004 National Monitoring the Future Survey

Used Marijuana one or more times in past year

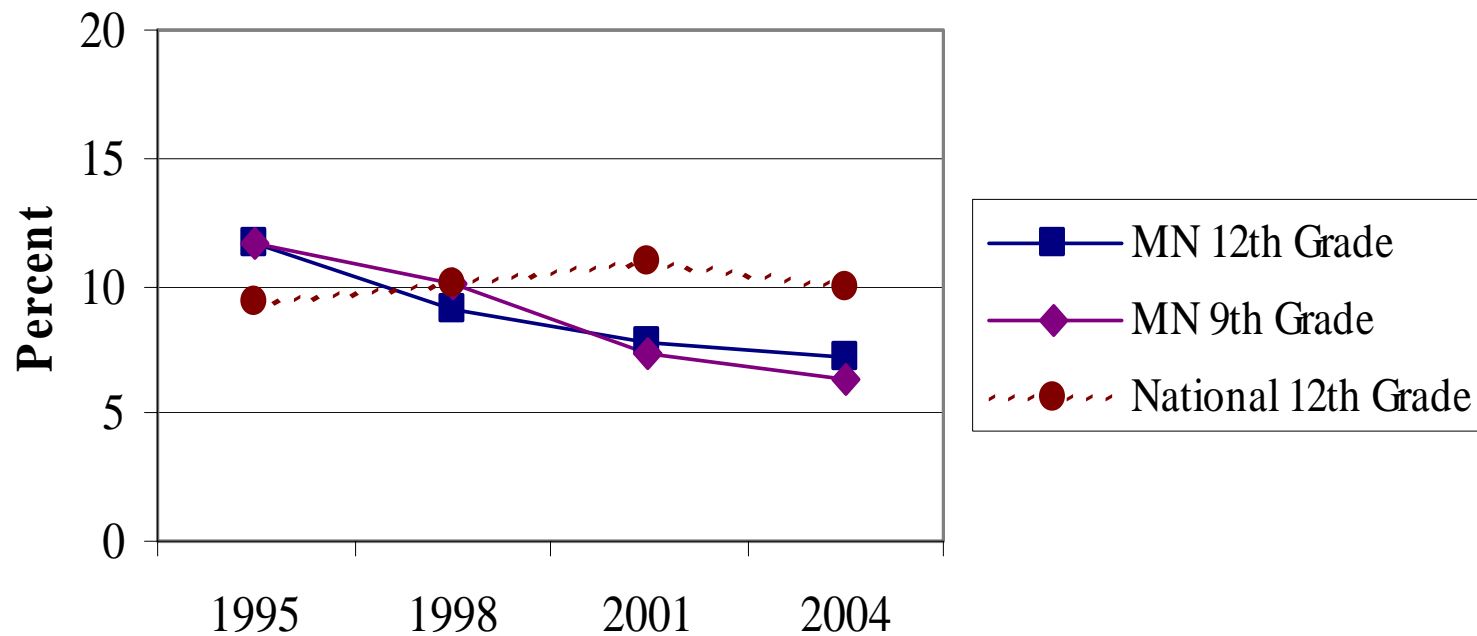


Data Sources: Minnesota Student Survey, 2004 National Monitoring the Future Survey

Used someone else's prescription drugs in past year

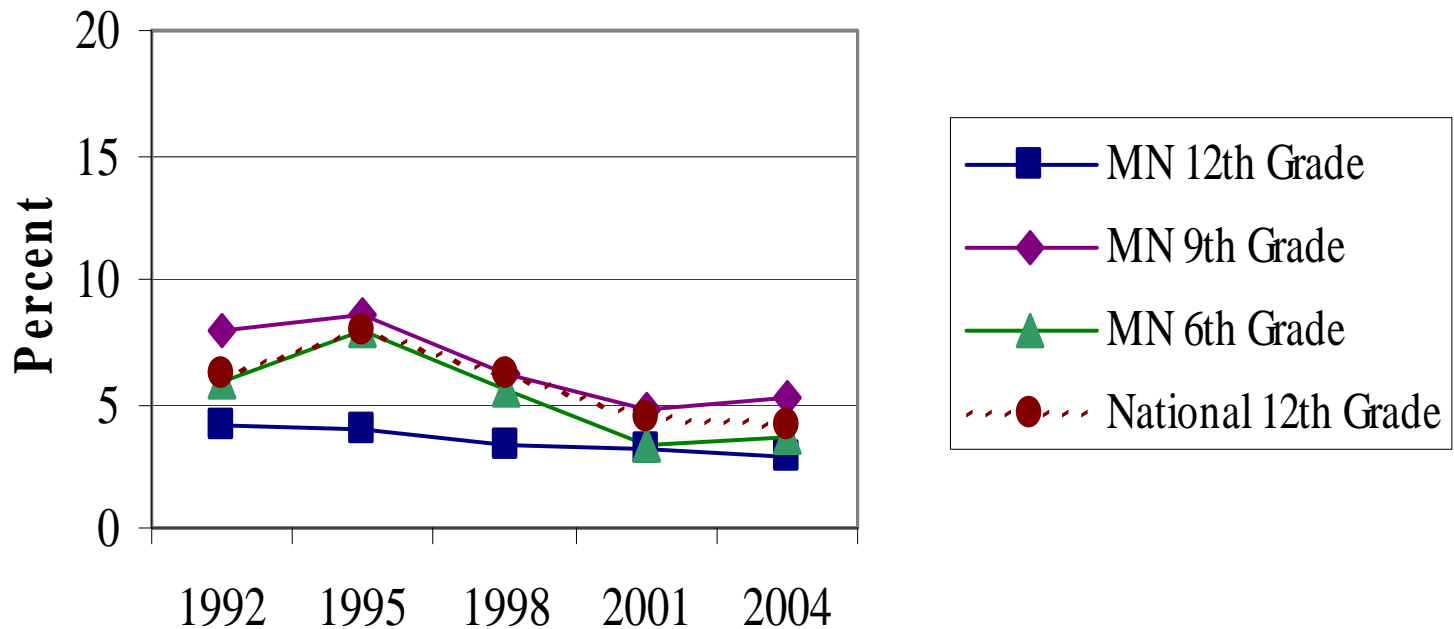


Used Amphetamines one or more times in past year



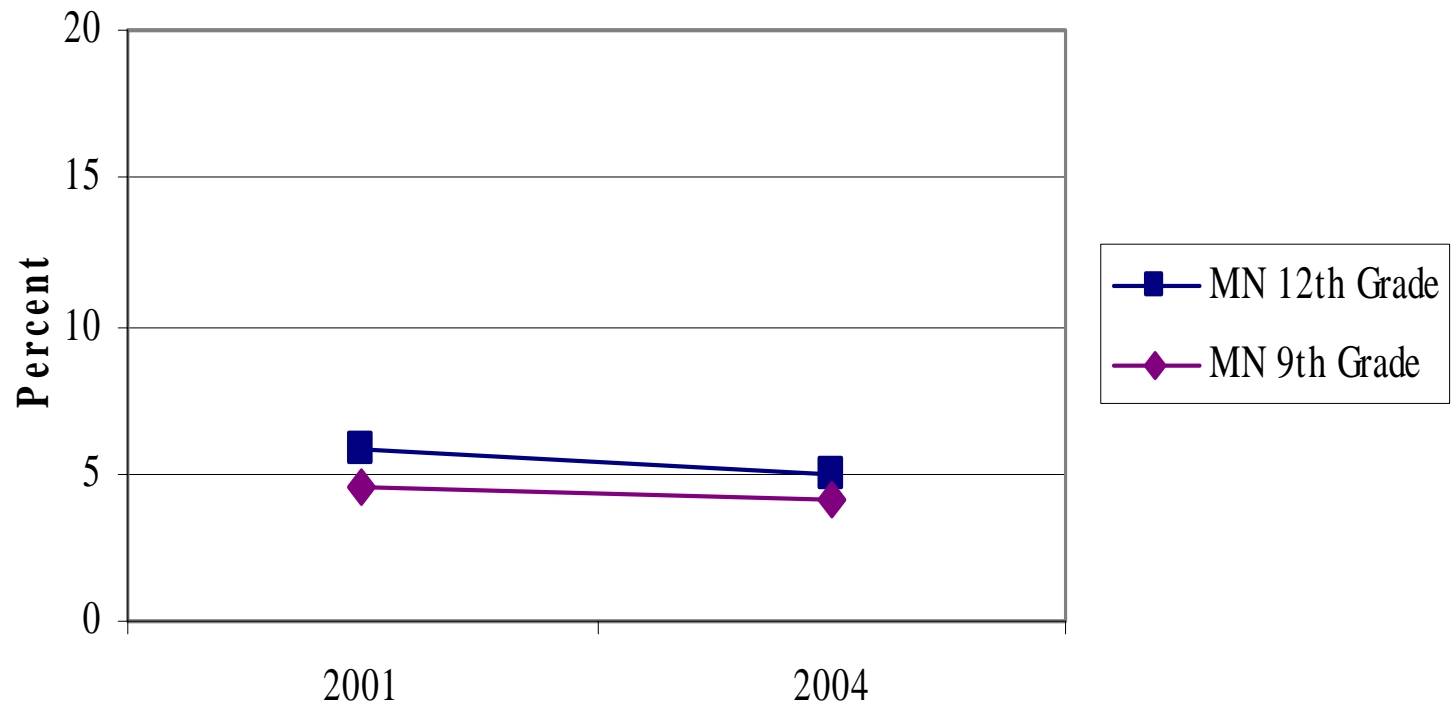
Data Sources: Minnesota Student Survey, 2004 National Monitoring the Future Survey

Used Inhalants one or more times in past year

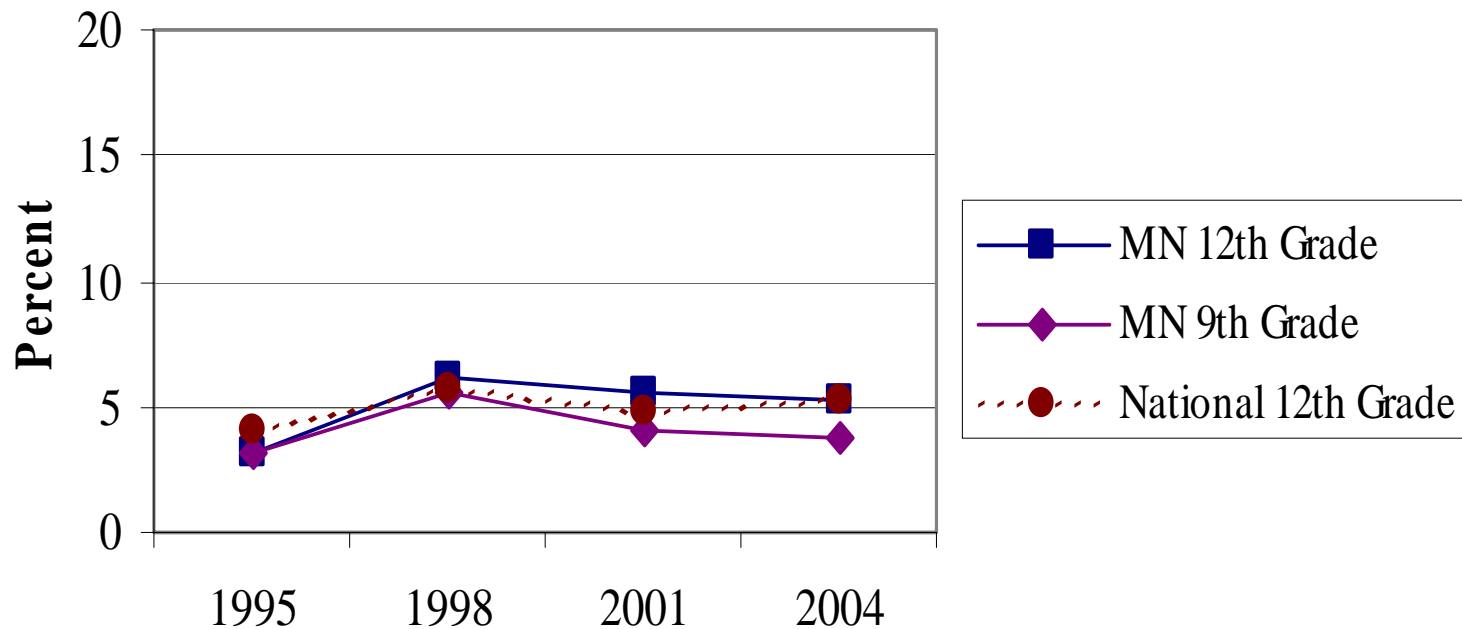


Data Sources: Minnesota Student Survey, 2004 National Monitoring the Future Survey

Used Methamphetamines one or more times in past year



Used Crack/Cocaine one or more times in past year



Data Sources: Minnesota Student Survey, 2004 National Monitoring the Future Survey

For More Information on the Minnesota Student Survey:

Go to www.mnschoolhealth.com and click on the “Data” tab.

To get:

- ☀ Statewide and county level data
- ☀ Reports
- ☀ Background information on the Minnesota Student Survey